

Erratum

Galis, F. *et al.* (2002) Conservation of the segmented germband stage: robustness or pleiotropy?
Trends Genet. 18, 504–509

Figure 3 is not the correct figure, for which we apologize. It should be:

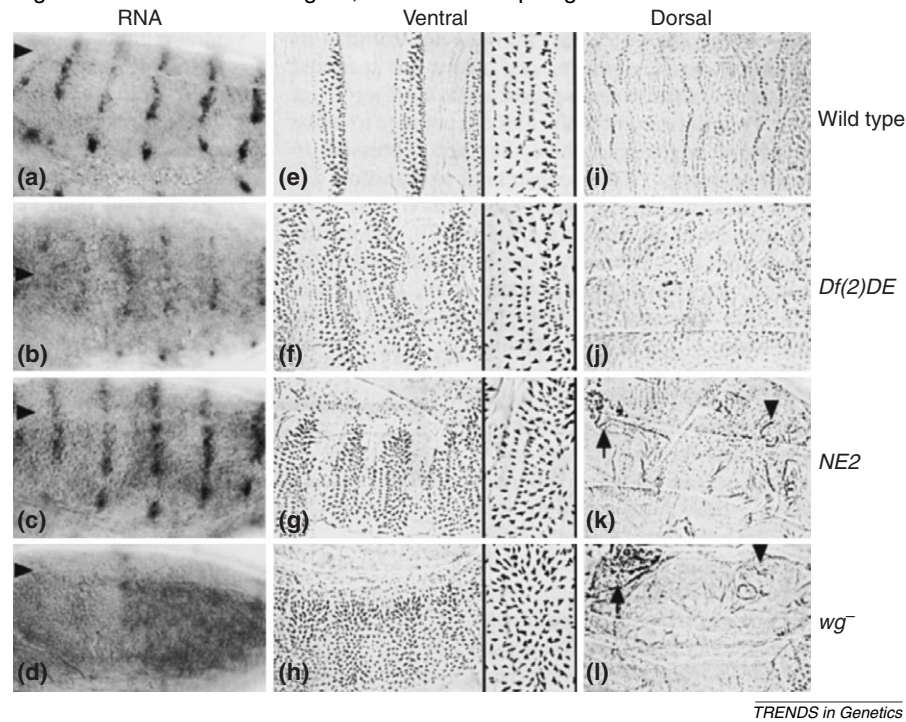


Fig. 3. Null (*wg⁻*), reduced [*Df(2)DE*] and partial (*NE2*) function mutations of the *wg* gene lead to abnormalities in the larval ectoderm. Expression of *wg* in the ectoderm (A–D), and cuticular pattern in the ventral (E–H) and dorsal (I–L) larval epidermis (W.T. denotes wild type). In *Df(2)DE* mutants, *wg* expression is reduced, and in *NE2* mutants, *wg* transport is hampered (reproduced, with permission, from Ref. [27]).